

PRACTICE AREAS

- Financial Services

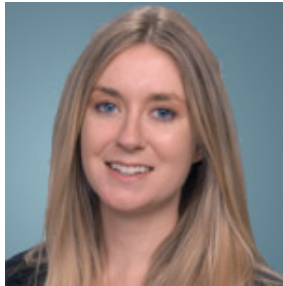
EDUCATION

- B.A., University of the South, 2000
- J.D., Tulane University, 2003 cum laude

BAR & COURT ADMISSIONS

- North Carolina, 2007
- Alabama, 2003 (inactive)

SHANNON E. HOFF



ASSOCIATE

100 North Tryon Street  
Suite 4700  
Charlotte, NC 28202-4003

CHARLOTTE

TEL: (704) 331-3640  
FAX: (704) 378-5944

[shannonhoff@mvalaw.com](mailto:shannonhoff@mvalaw.com)

Shannon Hoff practices within the financial services area with a focus on creditors rights and bankruptcy. Her practice focuses primarily on the representation of agent banks in connection with syndicated credit facilities.

PROFESSIONAL AFFILIATIONS

- Alabama State Bar Association
- Louisiana State Bar Association
- North Carolina Bar Association
- Florida State Bar Association